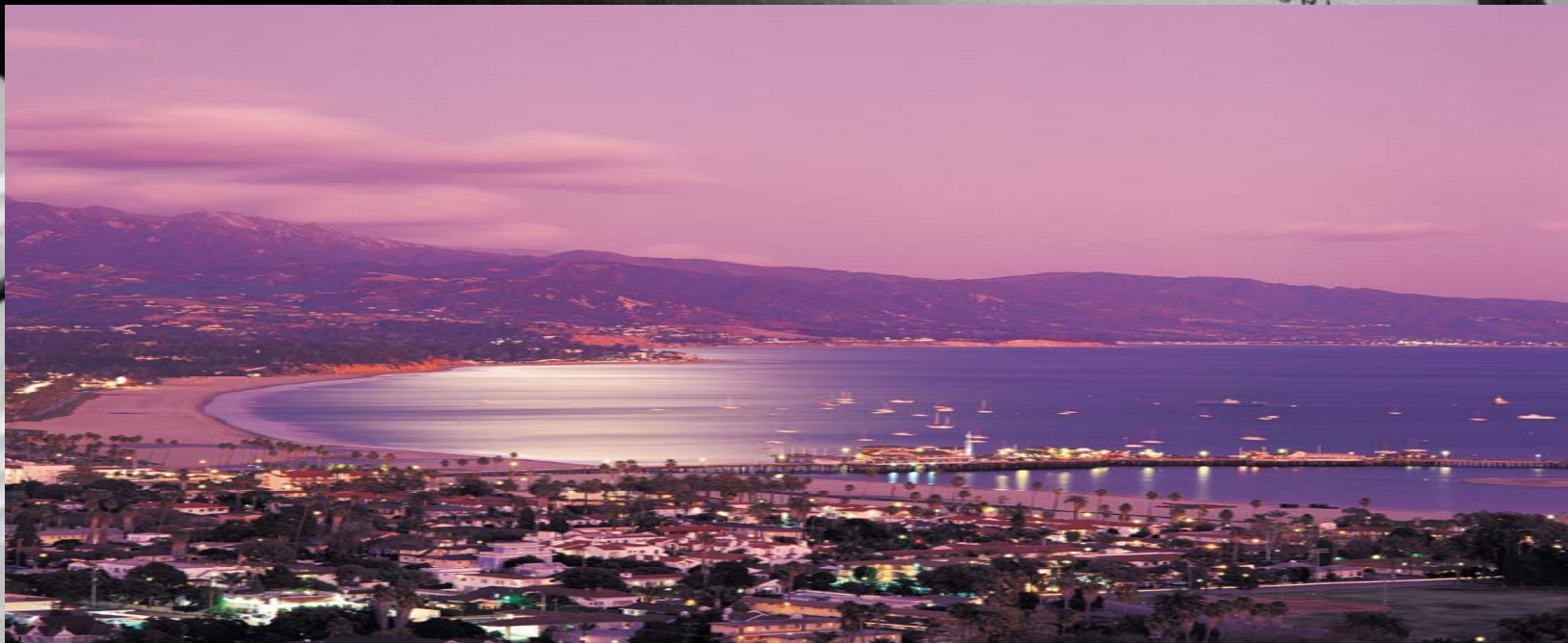


Detection Systems for IHC





IHC Detection Systems



Above: Bio SB Biotin and Polymer based detection systems

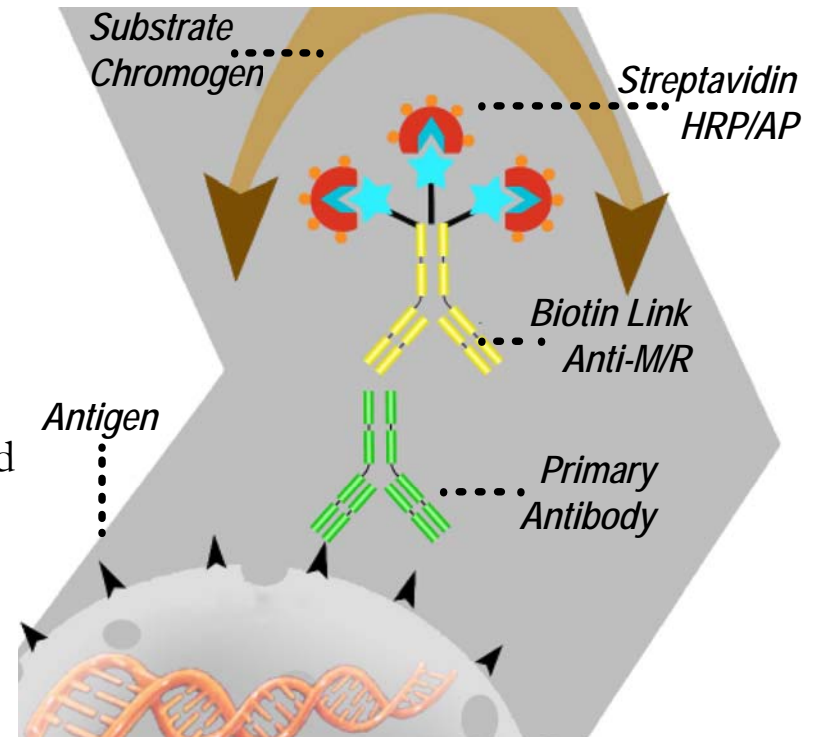
Reagents: Detection Systems

- Comes pre-programmed with all Bio SB Reagents
 - Detection Systems
 - Bio SB ImmunoDetector HRP & AP
 - Bio SB PolyDetector HRP & AP
 - Bio SB PolyDetector PLUS HRP



ImmunoDetector HRP/AP

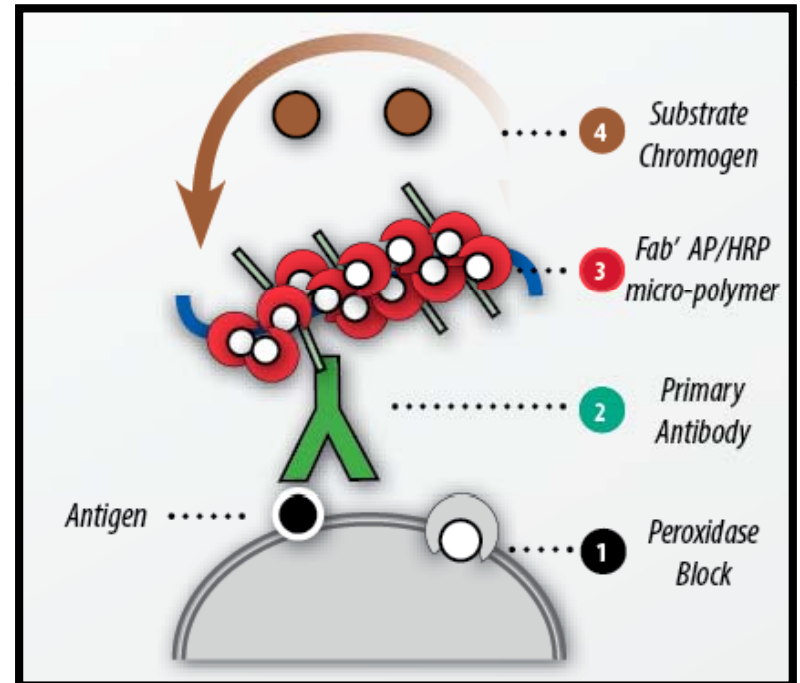
- Biotin-Streptavidin Immunohistochemistry 3-Step Detection Technology.
- Universal Ready-to-use formulation detects Mouse or Rabbit Antibodies .
- Optimized for use with Bio SB Tinto Prediluted Antibodies.
- Approved for IVD use in formalin-fixed and frozen tissue sections.
- Some kits available in Mouse or Rabbit configurations . Contact Bio SB for details.



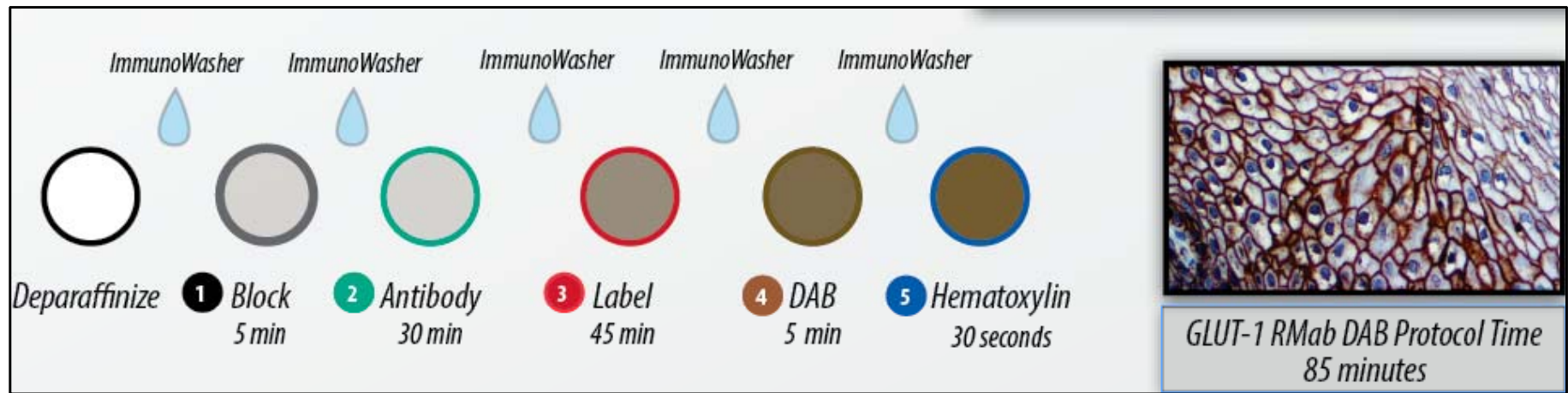
PolyDetector HRP & AP

Bio SB PolyDetector (AP/HRP)

- ▣ One-Step Micro-polymer based
 - ▣ Smaller than other polymers
- ▣ Anti-Mouse & Anti-Rabbit Fab' micropolymer.
- ▣ High sensitivity assay with low background.
- ▣ Low number of steps
- ▣ Ideal for multiplex applications



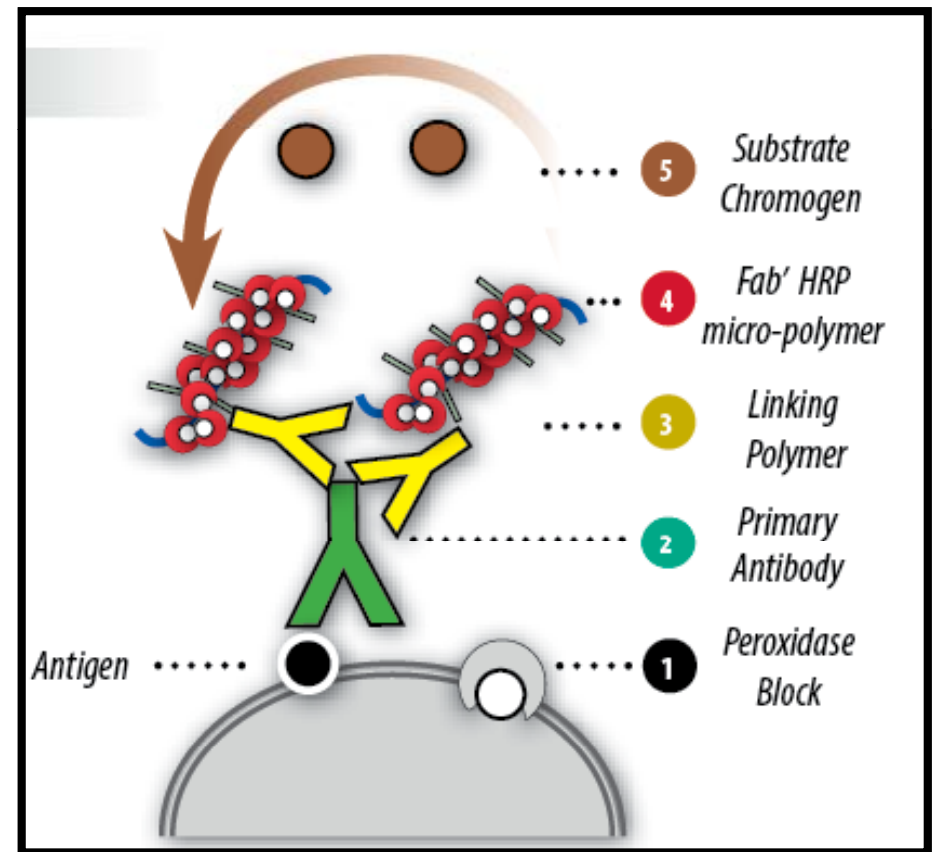
PolyDetector HRP & AP



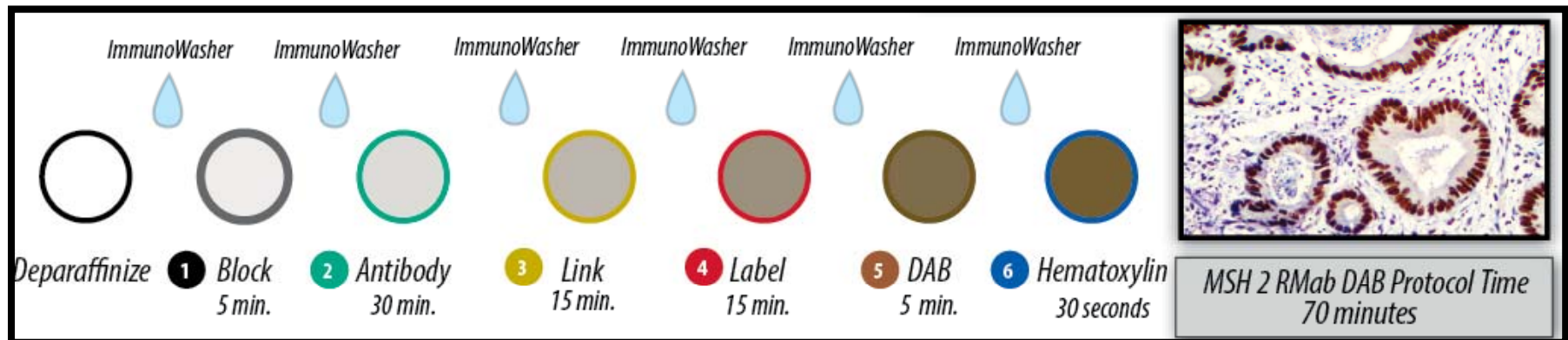
PolyDetector Plus HRP/DAB

Bio SB PolyDetector Plus HRP

- ❑ Two-Step Micro-polymer based
- ❑ Anti-Mouse & Anti-Rabbit Fab' micropolymer.
- ❑ Very sensitive with low background.
- ❑ Ideal for the detection of hard to detect targets like ALK/EML4, BRAF V600E, c-Myc, CD25, Cyclin D1, MyoD1, Napsin, PD-L1, ROS-1, SV40, TCR BF1, etc.

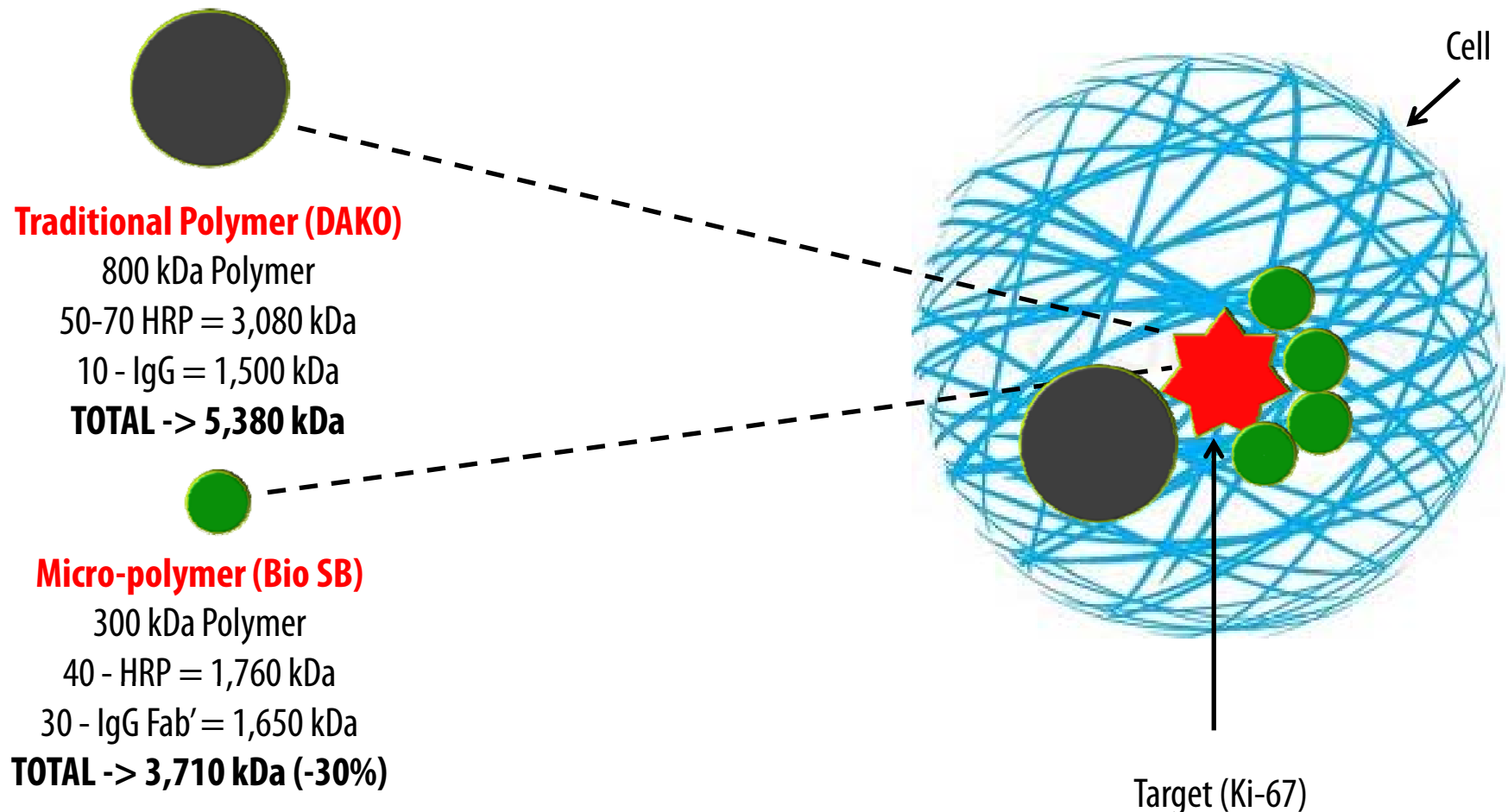


PolyDetector Plus HRP DAB



What is a Micro-polymer?

- Smaller than the first generation of IHC Polymers developed in the 90's



What is a Micro-polymer?

- ❑ Allows for stronger signal because of easier tissue penetration to all cellular compartments
- ❑ Less background than other polymers because it does not use the whole IgG, but **the IgG Anti-Mouse and Anti-Rabbit Fab' fragment**
- ❑ Lower incubation times

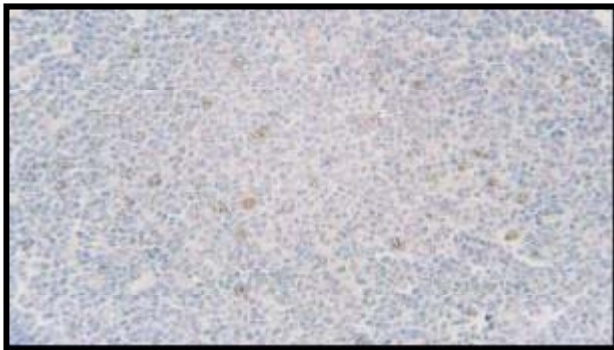
Comparison of different non-biotin 1-step polymer detection systems: **Negative Control**



BIO SB PolyDetector



Leica Novolink

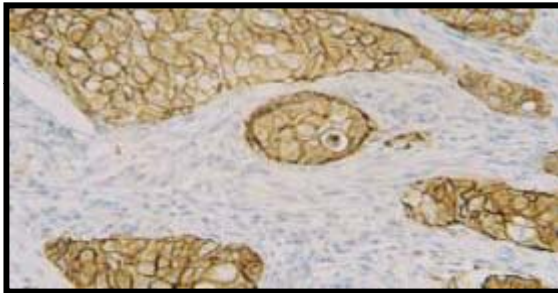


Invitrogen Picture +

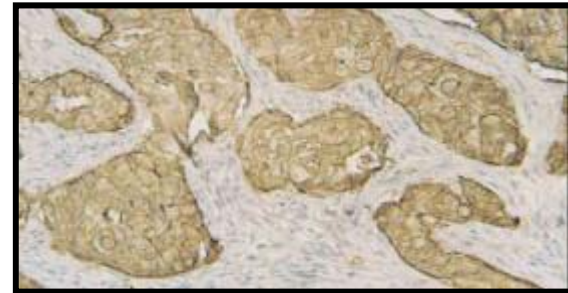


DAKO Envision +

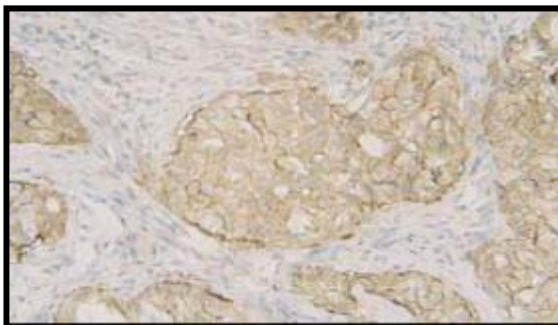
Comparison of different non-biotin, 1-step
polymer systems: **HER2-neu MMab**



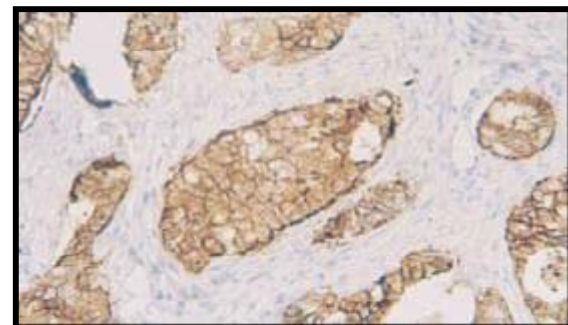
BIO SB PolyDetector



Leica Novolink

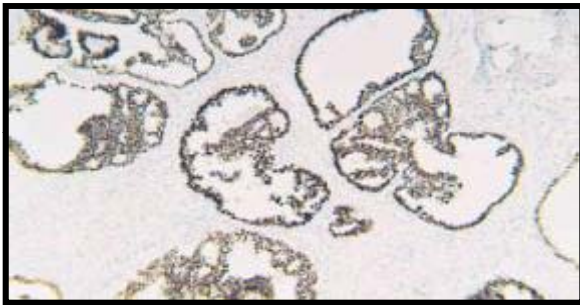


Invitrogen Picture +

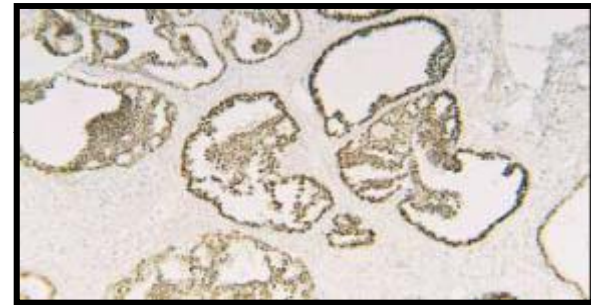


DAKO Envision +

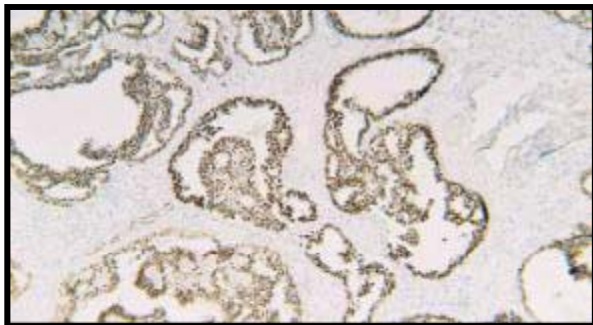
Comparison of different non-biotin, 1-step polymer systems: **PR RMaB**



BIO SB PolyDetector



Leica Novolink

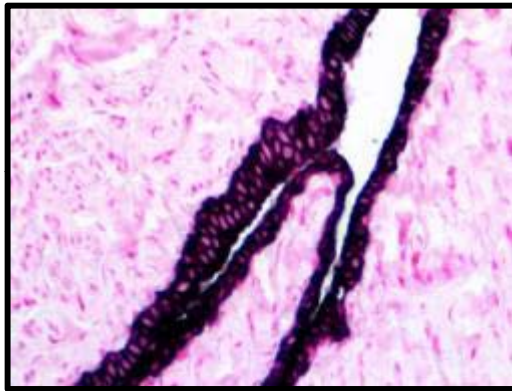


Invitrogen Picture +

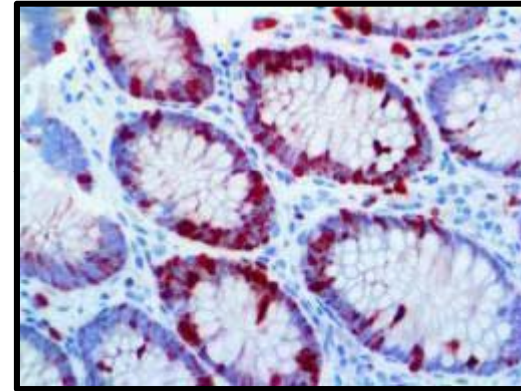


DAKO Envision +

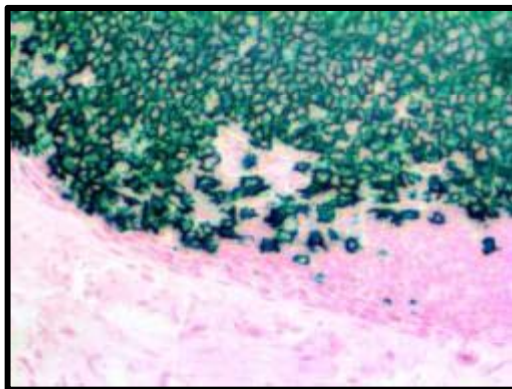
Better Sensibility & Specificity in IHC!



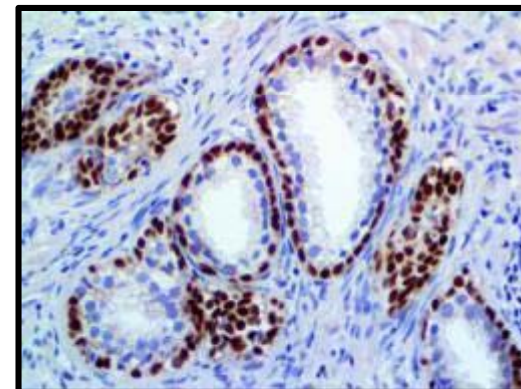
CK Oscar-*ALK Blue*



Ki67-*AEC*



CD20-*HRP Green*



p40- *DAB*