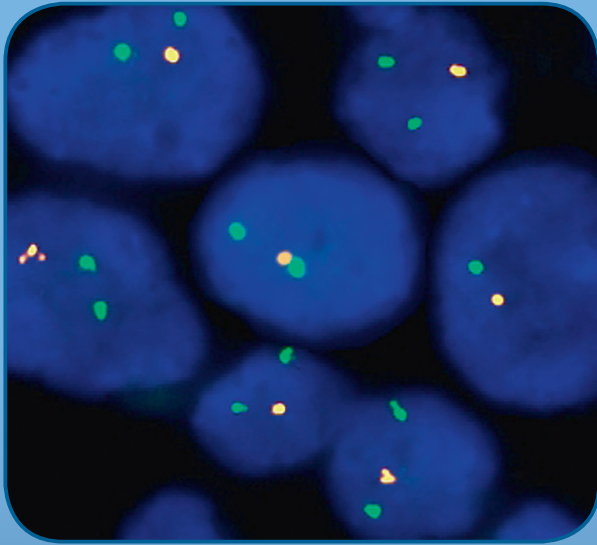




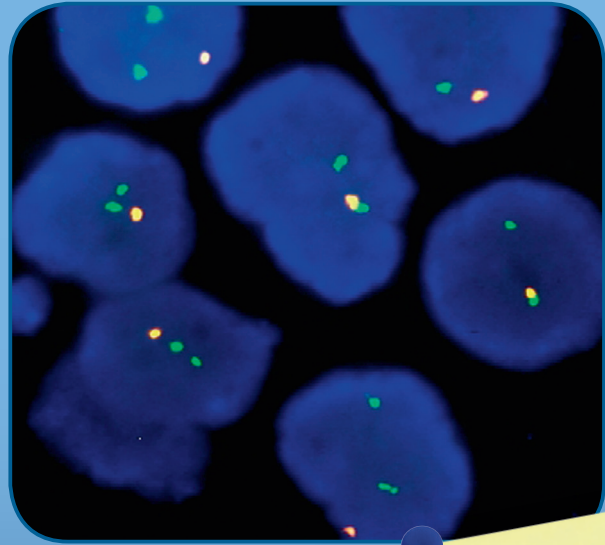
ZytoLight®

Products for FISH analysis

The ZytoLight® Glioma 1p/19q Probe Set



1p36 Deletion



19q13 Deletion

NEW
Glioma 1p/19q Probe Set
includes the innovative
ZyBlack™ Quenching Solution for
Autofluorescence Elimination

ZytoLight® Glioma 1p/19q Probe Set

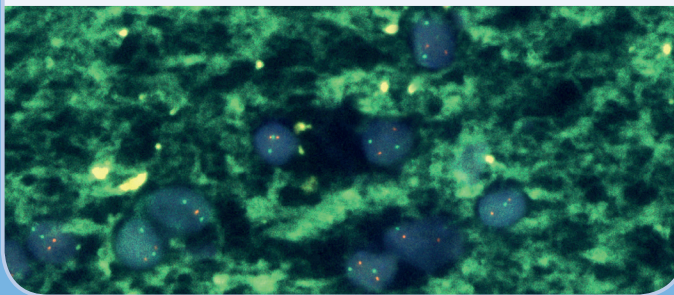
Deletions affecting the short arm of chromosome 1 (1p36) and the long arm of chromosome 19 (19q13) are frequently found in human gliomas and are associated with a better survival. The new ZytoLight® Glioma 1p/19q Probe Set includes FISH probes for the detection of both 1p36 and 19q13 loci and the innovative ZyBlack™ Quenching Solution.

Prod. No.	Product	Tests*
Z-2272-20	ZytoLight Glioma 1p/19q Probe Set CE <input type="checkbox"/> IVD Incl. ZytoLight SPEC 1p36/1q25 Dual Color Probe, 0.2 ml; ZytoLight SPEC 19q13/19p13 Dual Color Probe, 0.2 ml; ZyBlack Quenching Solution, 8 ml	20

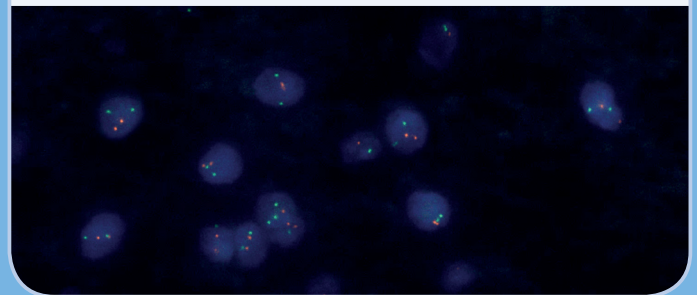
ZyBlack™ Quenching Solution reduces Autofluorescence

Several types of tissue tend to emit intense autofluorescence, including brain, making it difficult to evaluate FISH results. ZyBlack™ Quenching Solution is a ready-to-use solution that reduces autofluorescence without adversely affecting tissue integrity or specific fluorescence signals. It can be easily incorporated into the FISH protocol by applying it after the proteolytic pretreatment.

Without ZyBlack™ Quenching Solution



With ZyBlack™ Quenching Solution



Brain tissue section hybridized with the ZytoLight SPEC 1p36/1q25 Dual Color Probe.

Prod. No.	Product	Volume
BS-0002-8	ZyBlack Quenching Solution CE <input type="checkbox"/> IVD	8 ml

Brain & Neural Tumors Probes of the ZytoLight® Portfolio

Prod. No.	Product	Label	Tests* (Volume)
Z-2075-50/-200	ZytoLight SPEC 1p36/1q25 Dual Color Probe CE <input type="checkbox"/> IVD	●/●	5/20 (50/200 µl)
Z-2076-50/-200	ZytoLight SPEC 19q13/19p13 Dual Color Probe CE <input type="checkbox"/> IVD	●/●	5/20 (50/200 µl)
Z-2063-50/-200	ZytoLight SPEC CDKN2A/CEN 9 Dual Color Probe CE <input type="checkbox"/> IVD	●/●	5/20 (50/200 µl)
Z-2033-50/-200	ZytoLight SPEC EGFR/CEN 7 Dual Color Probe CE <input type="checkbox"/> IVD	●/●	5/20 (50/200 µl)
Z-2087-200	ZytoLight SPEC MET/CEN 7 Dual Color Probe CE <input type="checkbox"/> IVD	●/●	20 (200 µl)
Z-2074-50/-200	ZytoLight SPEC MYCN/2q11 Dual Color Probe CE <input type="checkbox"/> IVD	●/●	5/20 (50/200 µl)
Z-2205-200	ZytoLight SPEC NTRK2 Dual Color Break Apart Probe CE <input type="checkbox"/> IVD	●/●	20 (200 µl)
Z-2078-50/-200	ZytoLight SPEC PTEN/CEN 10 Dual Color Probe CE <input type="checkbox"/> IVD	●/●	5/20 (50/200 µl)
Z-2198-50	ZytoLight SPEC TP53/17q22 Dual Color Probe CE <input type="checkbox"/> IVD	●/●	5 (50 µl)

* Using 10 µl probe solution per test. CE IVD only available in certain countries. All other countries research use only! Please contact your local dealer for more information. All ZytoLight FISH probes can be combined with the ZytoLight FISH-Tissue Implementation Kit (Z-2028-5/-20) for FISH analyses on FFPE specimens.

