



# Sales Information

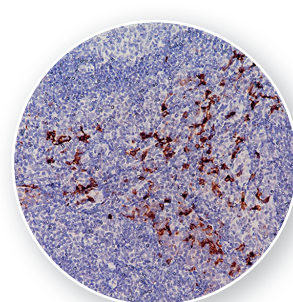


No. 5/18\_August 2018

## New antibody for the checkpoint inhibitor CTLA-4

Cytotoxic T lymphocyte-associated antigen-4 (CTLA-4) is a negative regulator of T cell-mediated immune responses functioning as an immune checkpoint regulator. CTLA-4 acts as a physiological brake on the activated immune system in order to maintain immune homeostasis.

The immunohistochemical detection of the CTLA-4 protein is of great importance for the use of several new cancer therapeutics of the group of checkpoint inhibitors like Ipilimumab and Tremelimumab. In addition, CTLA-4 has been shown to play a role in a couple of human diseases, e.g. diabetes mellitus, Graves' disease, Hashimoto's thyroiditis, and other autoimmune diseases.



CTLA-4 on tonsil

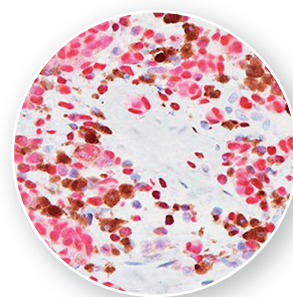
### Product description

Description	Method	Status	Format	Volume	Dilution	Cat. No.	List Price
<b>CTLA-4</b> Clone: UMAB249 Host: Mouse	P	CE/IVD	Ready-to-use	6 ml	-	MSG116	265,00 €
			Concentrate	0.5 ml	1:100	MSK116-05	950,00 €

## SOX10 - New monoclonal melanoma marker

SOX10 is a sensitive marker for malignant melanoma. In studies SOX10 nuclear expression was found in 97 % of melanomas whereas S100 protein was expressed in 91 % of melanomas. In contrast to other markers of melanocytes, SOX10 detects spindle cell and desmoplastic melanoma with high sensitivity (100 %). Fibroblasts and histiocytes that

could histopathologically mimic melanoma cells show weaker SOX10 staining comparing to S100 and MiTF making the interpretation of immunostainings easier. SOX10 immunohistochemistry can be used to detect neurofibroma (96 – 100 % positivity), schwannoma (100 %) and malignant peripheral nerve sheath tumors (49 %).



SOX10 (BC34) on pigmented melanoma

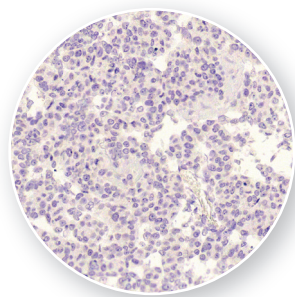
### Product description

Description	Method	Status	Format	Volume	Dilution	Cat. No.	List Price
<b>SOX10</b> Clone: BC34 Host: Mouse	P	CE/IVD	Ready-to-use	6 ml	-	MSG117	330,00 €
			Concentrate	0.5 ml	1:100 - 1:200	MSK117-05	220,00 €

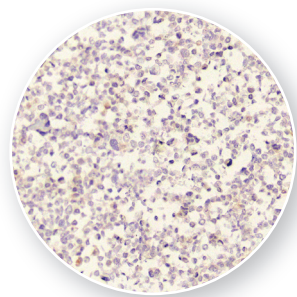
## Cell Control Slides PD-L1 (graded)

The new Cell Control Slides PD-L1 are suitable for the optimization of immunohistochemical stains with antibodies directed to PD-L1. One PD-L1-negative cell line core and 3 cell line cores with graded amounts of PD-L1 expression are attached to the slides. Because cell lines with different PD-L1 expression levels are included it is easy to standardize the immunochemical detection protocol.

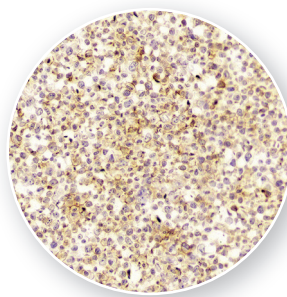
All cores have a diameter of 2 mm. The cells are fixed in buffered formalin and embedded in paraffin. The sections are cut at 4 µm, attached to coated slides and dried over night at 37° C. The small size of the sections allows for simultaneous mounting of patient tissue sections on the same slide. Therefore you will have an on-slide control array staining (OSCAR) proving a regular staining control even after years of storage.



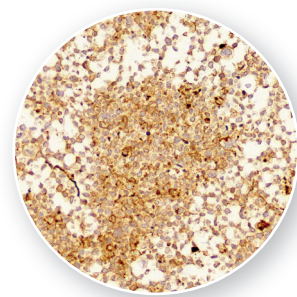
Negative cell line



Low expressing cell line



Medium expressing cell line



High expressing cell line

## Cell Control Array Bacteria plus Fungi

The new version of our Cell Control Array Bacteria plus Fungi contains a different strain of mycobacteria in order to improve the control of Ziehl-Neelsen stains for the identification of acid-fast bacteria.

### Product description

Description	Status	Amount	Cat. No.	List Price
<b>Cell Control Slides PD-L1 (graded)</b>	RUO	5 slides	CCS-PDL1-G	75,00 €
<b>Cell Control Array Bacteria plus Fungi</b>	RUO	1 block	MB-CC BAC	200,00 €

## Discontinued products

Discontinued	Alternative
MDM2 613-0098	MDM2 113-0230
CD22 603-0644, 603-0645	CD22 503-19021, 503-19024

### contact

ZytoMed Systems GmbH | Anhalterstraße 16 | 14163 Berlin | Germany | Fon +49 30 804 984 990 | Fax +49 30 804 984 999  
international@zytoMed-systems.de | www.zytoMed-systems.com